

ALTO CLEF FLASHCARDS



provided by
ORCHESTRATION ONLINE

ALTO CLEF FLASHCARDS

This deck is created specifically to improve the score-reader's grasp of alto clef reading; though it might well be used in a practical sense for musicians training on viola or trombone, or singers reading alto clef parts.

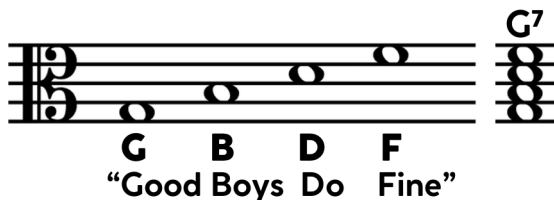
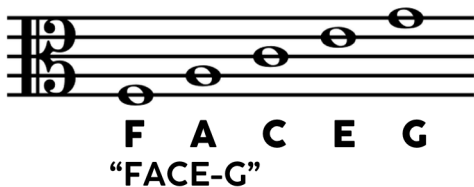
The author recommends training by breaking down the deck into smaller, focused sets of pitches; starting with the line and space notes within the alto staff (F3-G4). Drill these pitches using the formulas provided until each note is instantly recognisable. Then use the same procedure with the ledger line notes separately. Once those have been mastered, then mix all the cards together and continue to test yourself until your recognition of each pitch is instantaneous.

After this level of fluency has been achieved, follow up your training with the study of alto clef instrumentation and scoring provided on the orchestrationonline.com website under the titles "Alto Clef Reading Tips & Drills." Training is also provided to improve tenor clef reading skills.

Created by Thomas Goss, and released under a CC BY-NC-ND license. Cards may be copied & distributed non-commercially. No derivatives.

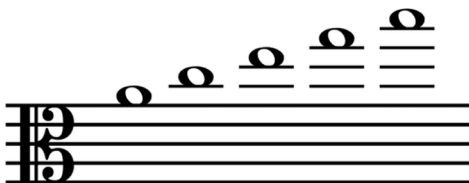
ALTO CLEF FORMULAS

IN-STAFF NOTES:



ALTO CLEF FORMULAS (cont.)

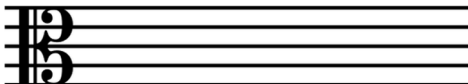
LEDGER LINE NOTES:



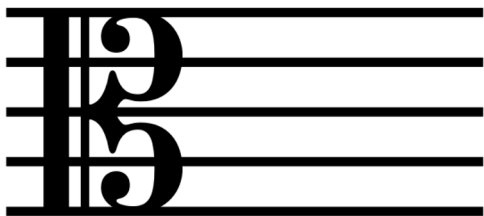
A C E G B
 “ACE-GB”

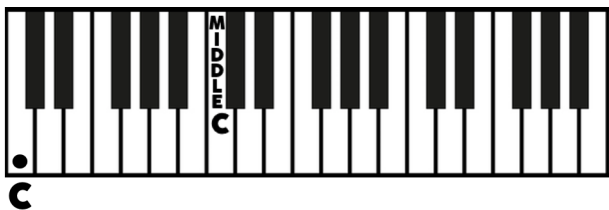
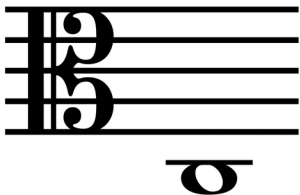


B D F A
 “Boys Do Fine Always”

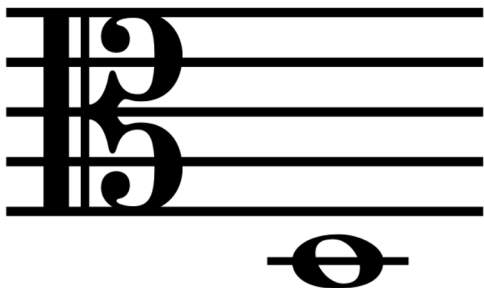


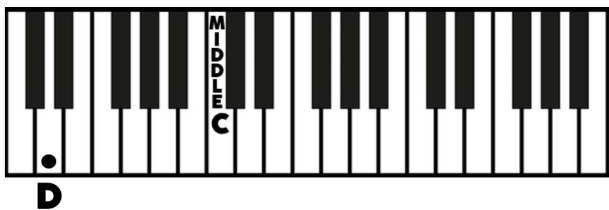
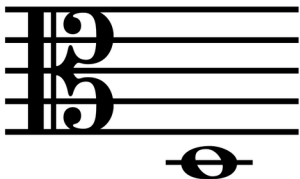
(**A**) (**B**) **C D E**



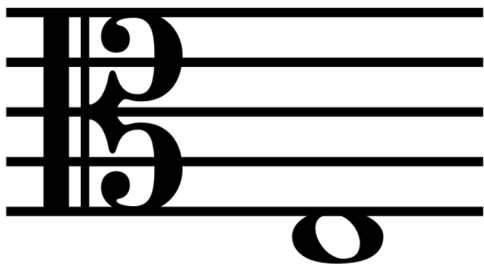


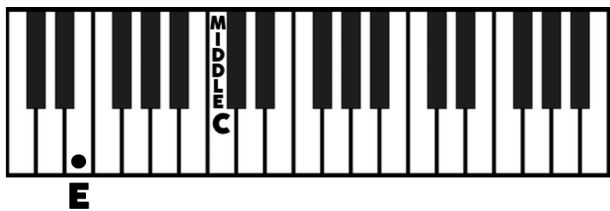
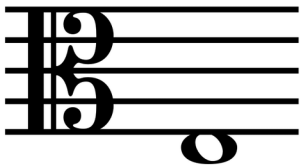
Note: pitch of viola's 4th string.

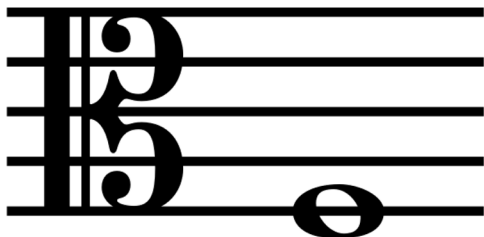


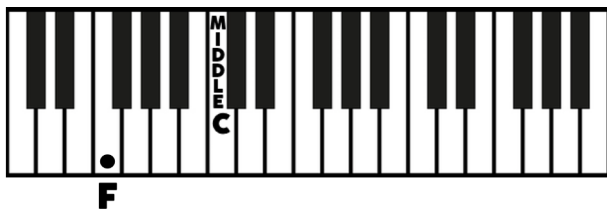
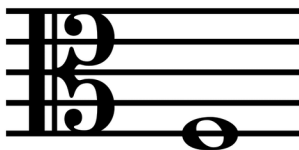


Note: extreme lower limit of contralto vocal range

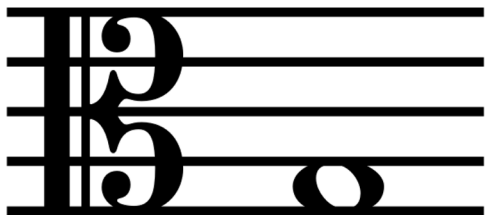


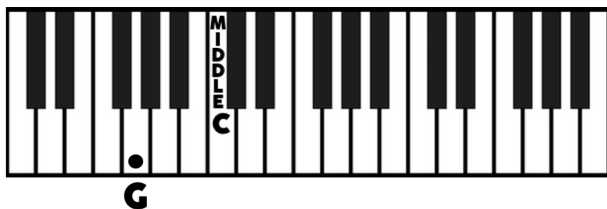
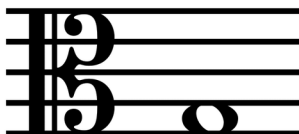




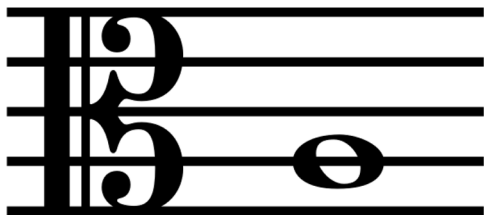


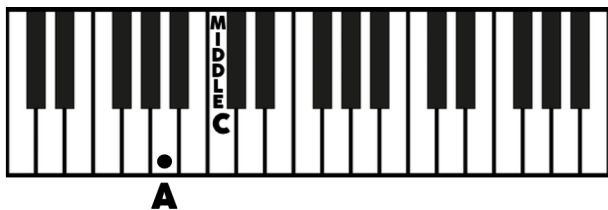
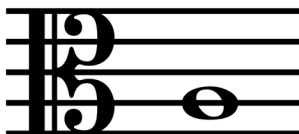
Note: general lower limit of contralto vocal range

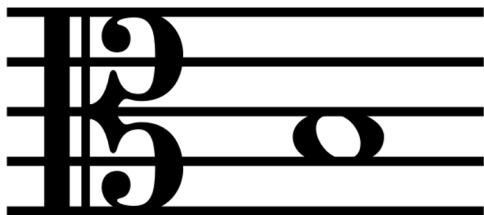


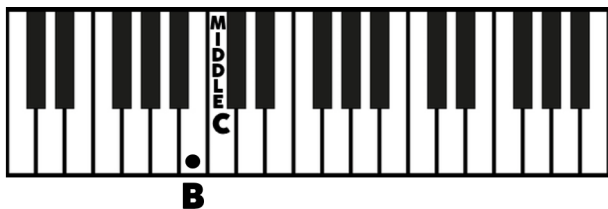
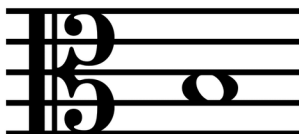


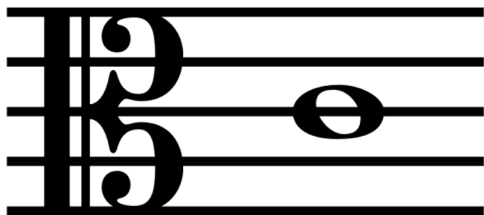
Note: pitch of viola's 3rd string

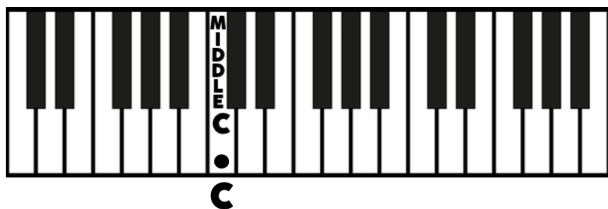
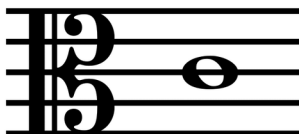


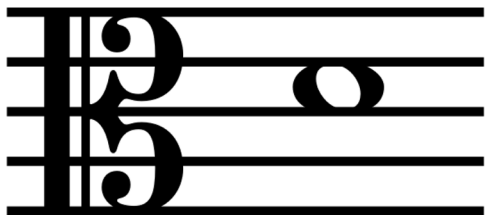


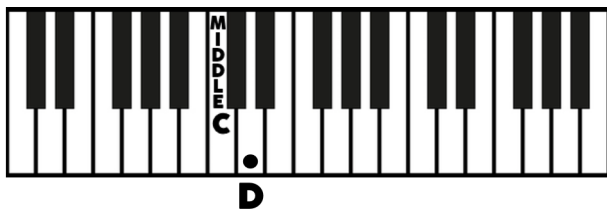
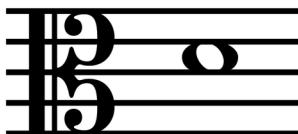




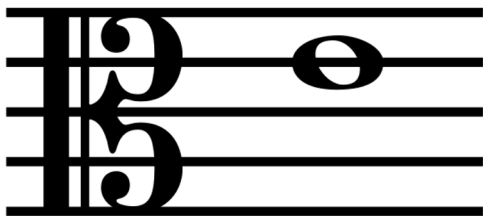


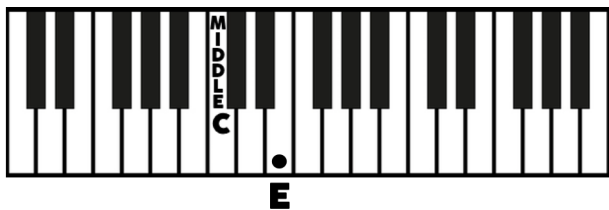
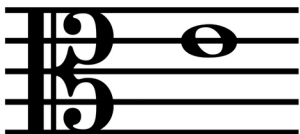


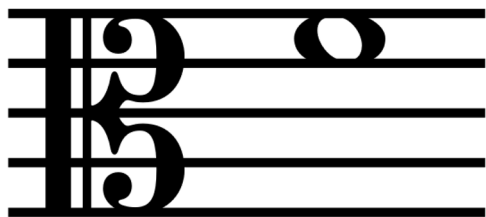


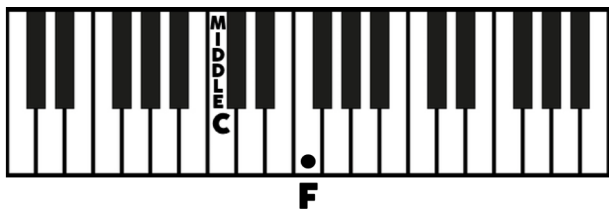
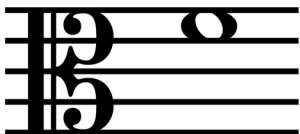


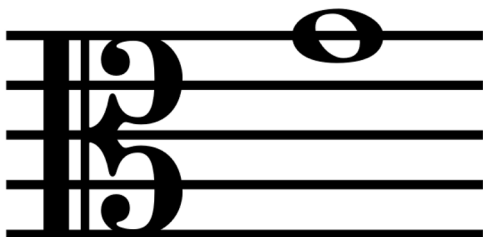
Note: pitch of viola's 2nd string.

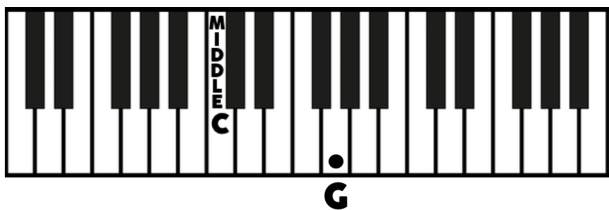
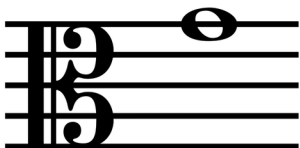




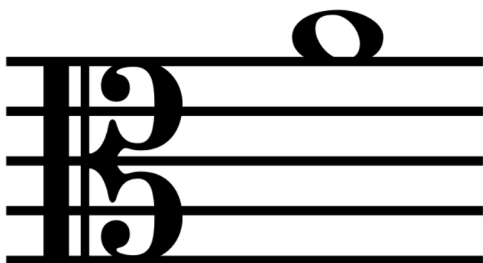


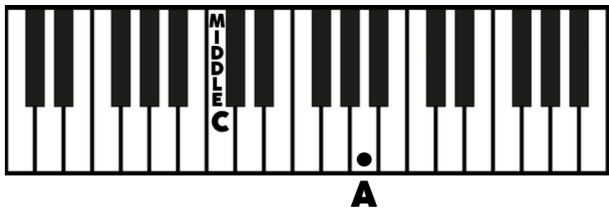
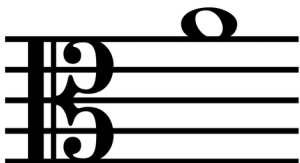




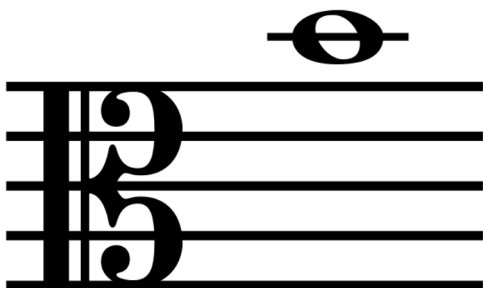


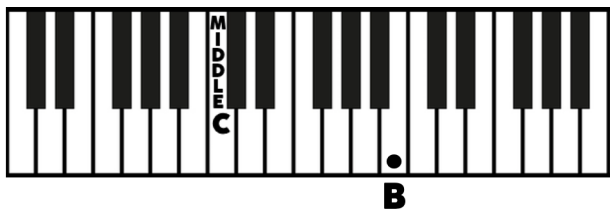
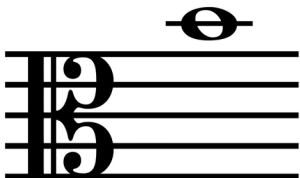
**Note: primo passaggio of contralto vocal range
(lower for some singers)**

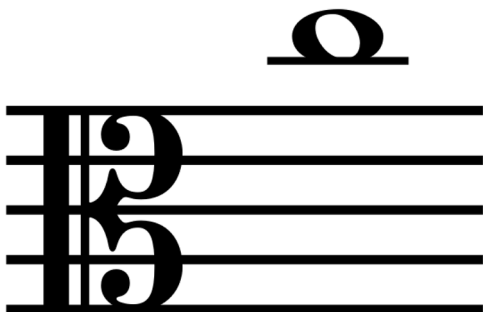


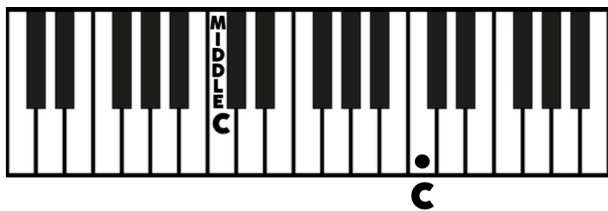
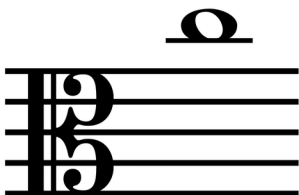


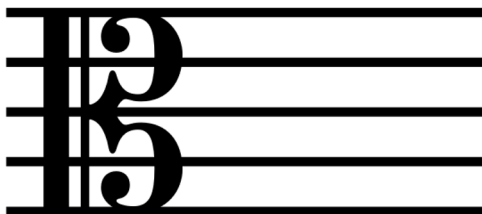
Note: pitch of viola's 1st string.

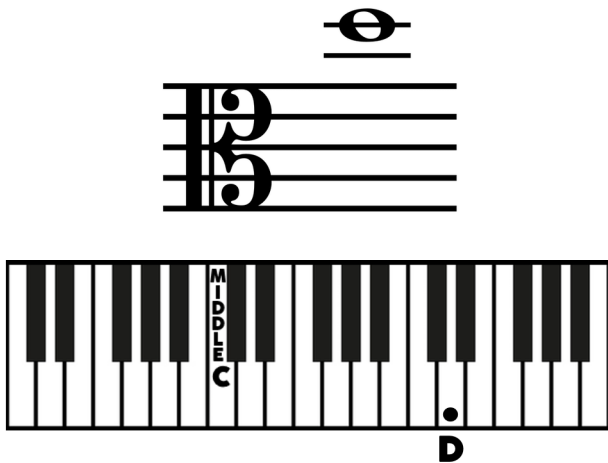




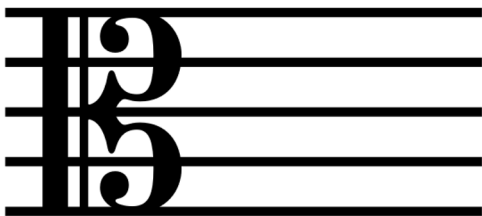


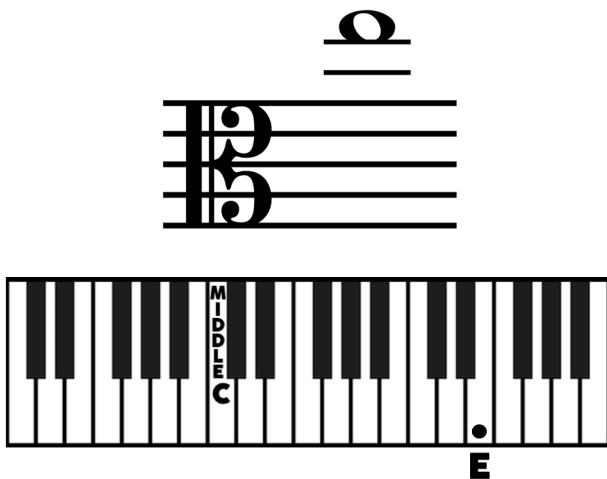




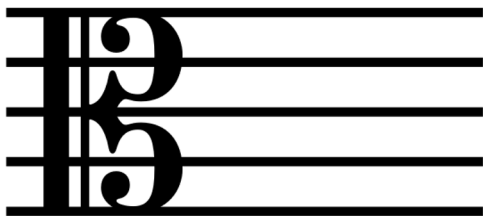


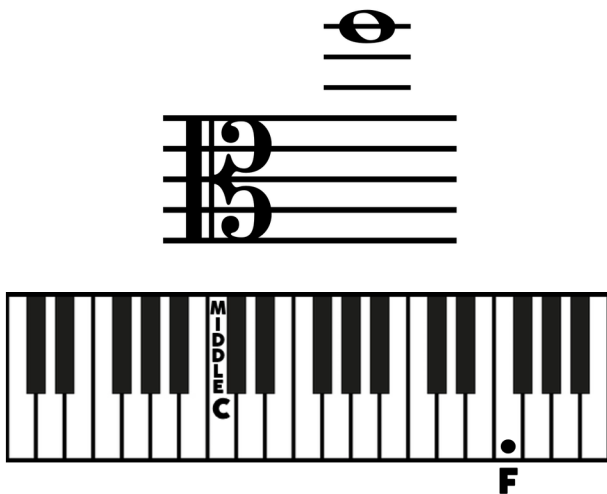
Note: secondo passaggio of contralto vocal range



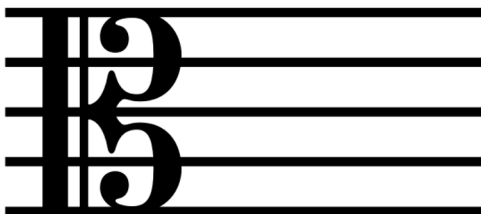


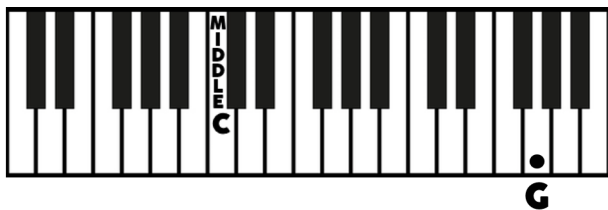
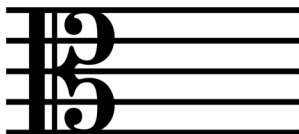
**Note: as E_b , general highest pitch of alto trombone range.
(Some play as high as F5.)**

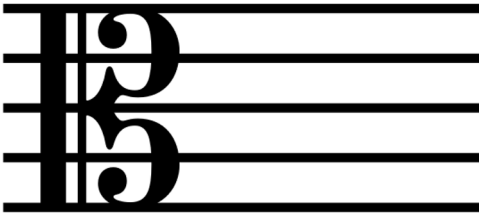


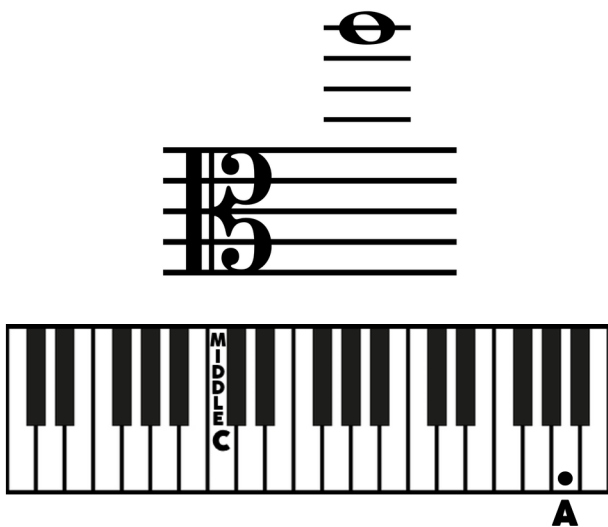


Note: general upper limit of contralto vocal range

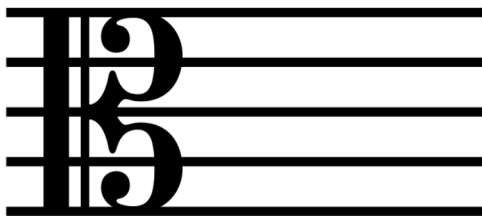


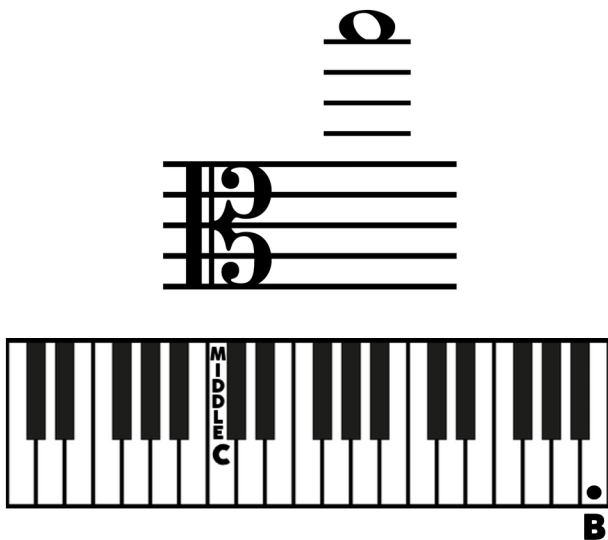






Note: extreme upper limit of contralto vocal range





Note: customary highest pitch of alto clef reading for viola, before necessarily changing over to treble clef (due to fingering and readability, a change to treble clef may occur from lower pitches).